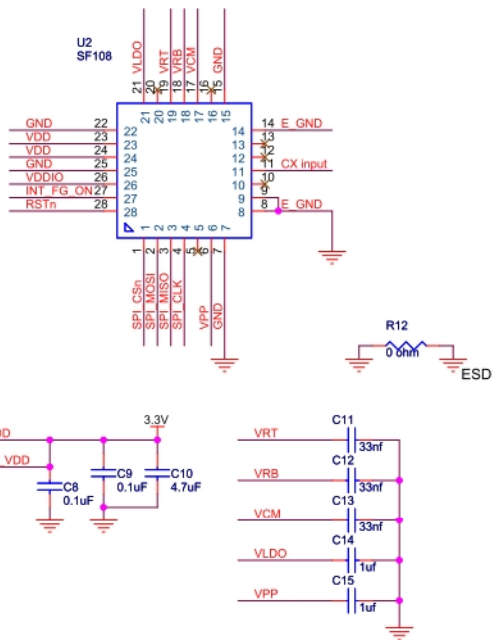
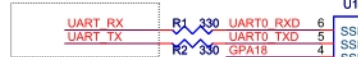


HF108+ MCU QFN32 Referece circuit

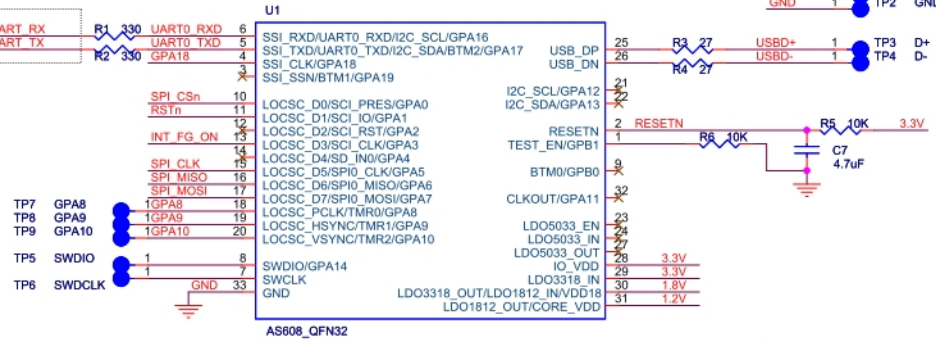
HF108 Package



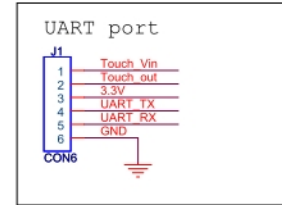
Connect to Host UART port



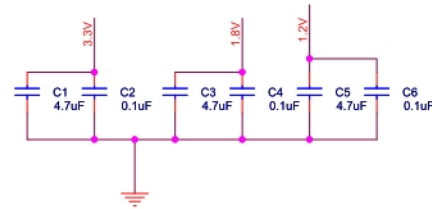
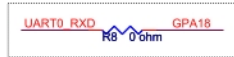
MCU QFN32



Connector reference

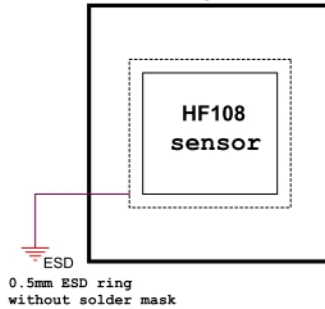


CLK 校準用

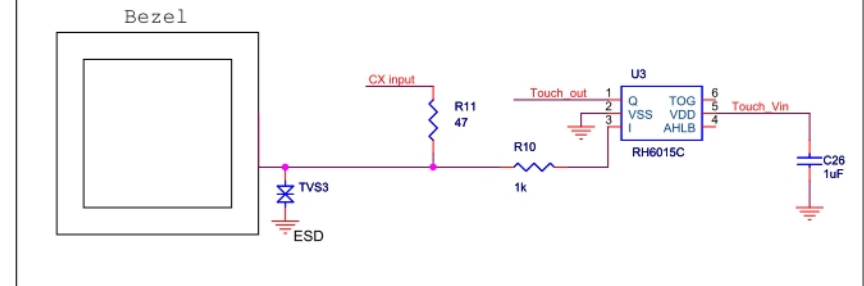


No bezel application

PCB



Touch IC application note



Note:

1. TP1~TP4 for download firmware use, it must make test pin
2. SW 2 pin for debug use, suggest make test pin
3. Connector for reference
4. R12 near the connector side
5. The ESD ring should have a minimum width of 0.5mm (copper without solder mask) is required on top layer. (If module without bezel) all signal net trace through via to bottom layer
6. If the application would use touch ic, please let the touch ic sensing pin connect to the SF108 pin11 CX_input pin with 47 ohm resistor

Rev	V01	Size	A3	Approved	Check	Design by	Prepared by
Sheet	1 of 1						Hyde Wu
Date	2018/12/17						